

European Environment Agency

Towards a recycling society



Özgür SAKI, EEA, *Project Manager, Waste prevention and management*

Almut REICHEL, EEA, *Project Manager, SCP and Waste*

Roberto ZOBOLI, ETC/SCP – *European Topic Centre on Sustainable Consumption and Production*

European Environment Agency



Overview

1. EU Waste Policy
2. Waste Indicators (generation and recycling)
3. EEA and ETC/SCP Activities on Waste

6th Environmental Action Programme of the EU

Decouple waste generation from economic growth and from environmental degradation

Substantially
reduce
waste
generation

Reduce
hazardousness
of waste

Encourage
recycling and
recovery

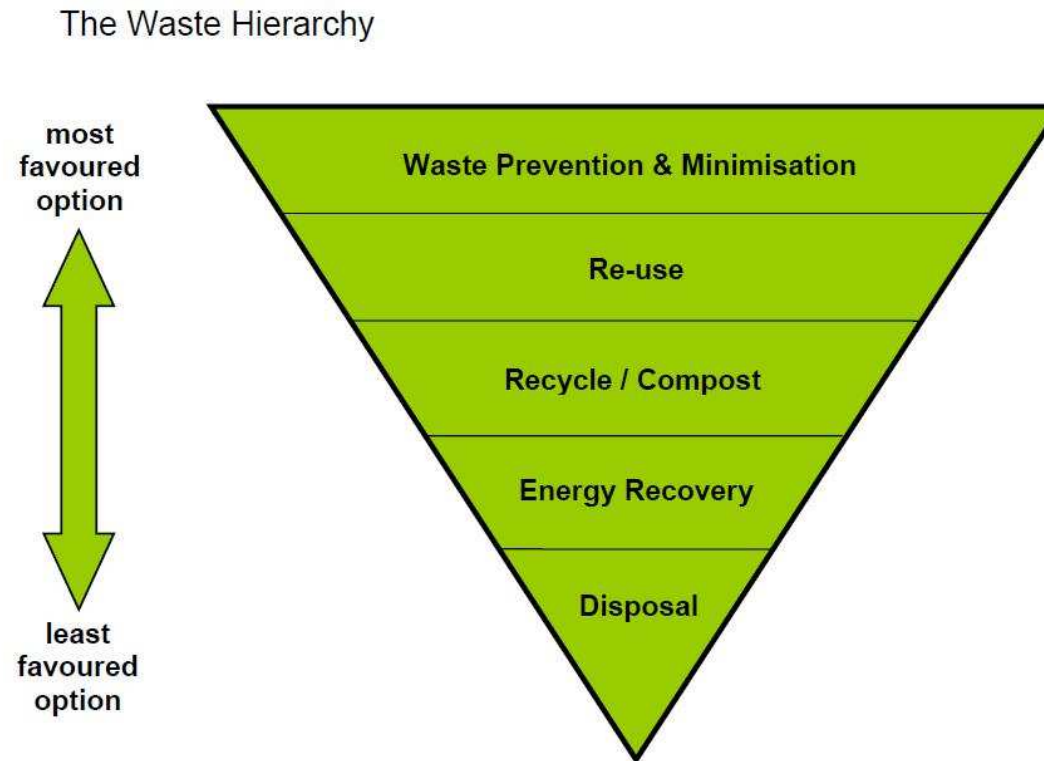


The long-term goal is for the EU to become a recycling society, that seeks to avoid waste and uses waste as a resource.

(Thematic Strategy on prevention and recycling of waste, 2005)

Waste Framework Directive

- Sets a "hierarchy" of waste management options: prevention is the preferred option, followed by reuse, recycling and other forms of recovery - with safe disposal as the last option.



Waste Framework Directive

- New **recycling targets** to be achieved by EU member states by 2020, including recycling rates of 50% for household and similar wastes (at least paper, plastic, metal and glass) and 70% for construction and demolition waste.
- Provisions on **waste prevention**: obligation for MS to develop national 'waste prevention programs' and a commitment from the EC to report on prevention and set waste prevention objectives.



Other Targets

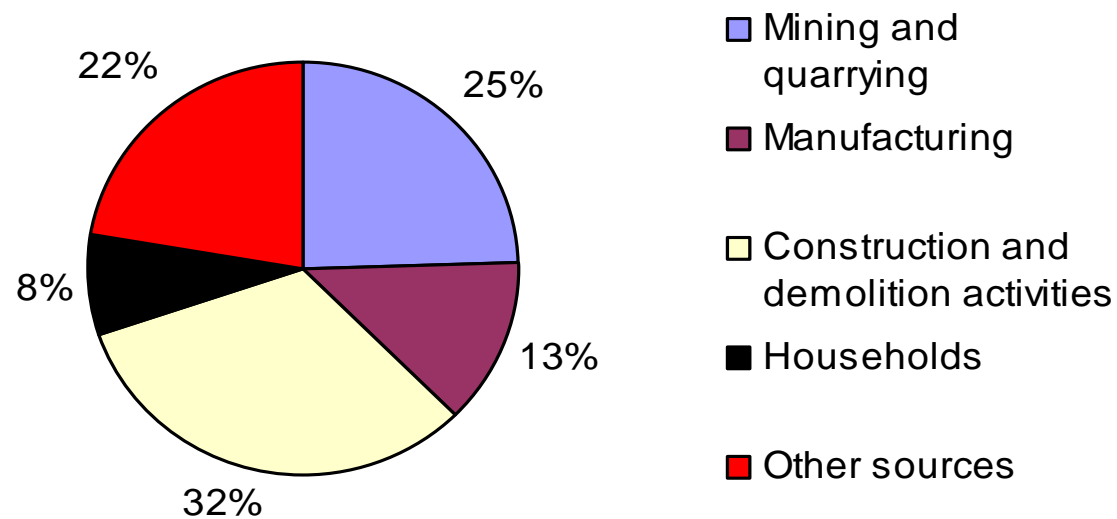
	Year	Recovery targets	Recycling targets	Collection targets
Packaging waste	2008	60%	55%	
End-of-Life Vehicles	2006	85% incl. Reuse	80% incl. reuse	100%
	2015	95% incl. Reuse	85% incl. reuse	100%
Waste Electrical and Electronic Equipment	2006	70 – 80 % (differs acc. to WEEE categories)	50 – 80 % incl. reuse (differs acc. to WEEE categories)	Min. 4 kg per inhabitant per year
Batteries	2012			25%
	2016			45%
Batteries, lead acid and accumulators	2011		50 – 75% efficiency (different targets for different battery types)	
Tyres	2006	Zero landfill of tyres		
Landfill of biodegradable municipal waste	2006	Reduction to 75% of the amount generated in 1995		
	2009	Reduction to 50% of the amount generated in 1995		
	2016	Reduction to 35% of the amount generated in 1995		

Facts and indicators: Where are we?

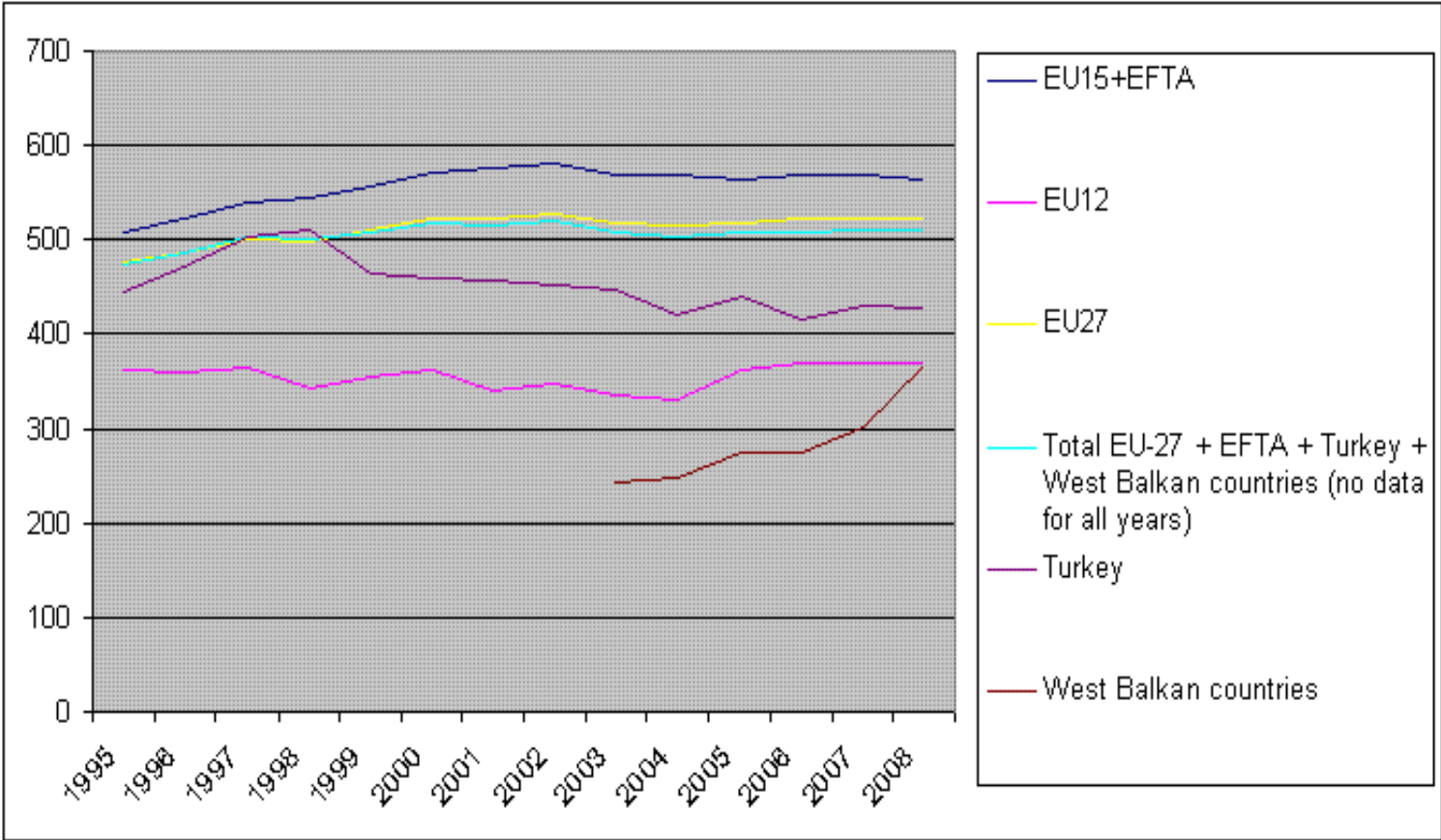
- **Total waste generation** in the EU 27: 3 billion tonnes (2006)
- Waste generation per capita: 6 tonnes
- Total **municipal waste generation** in the EU 27: 260 million tonnes (2008)
- **Municipal waste generation** per capita: 524 kg
- Total **hazardous waste generation**: 88 million tonnes (2006)

- In 2008, 40% of the total **municipal waste** was sent to landfills. In 1995, it was 62%. At the same time, more waste has been recycled and composted: 16% in 1995 and 39% in 2008.
- In 2007, 59 % of all **packaging waste** in the EU-27 was recycled and 14 % energy-recovered

Total waste generation, by source

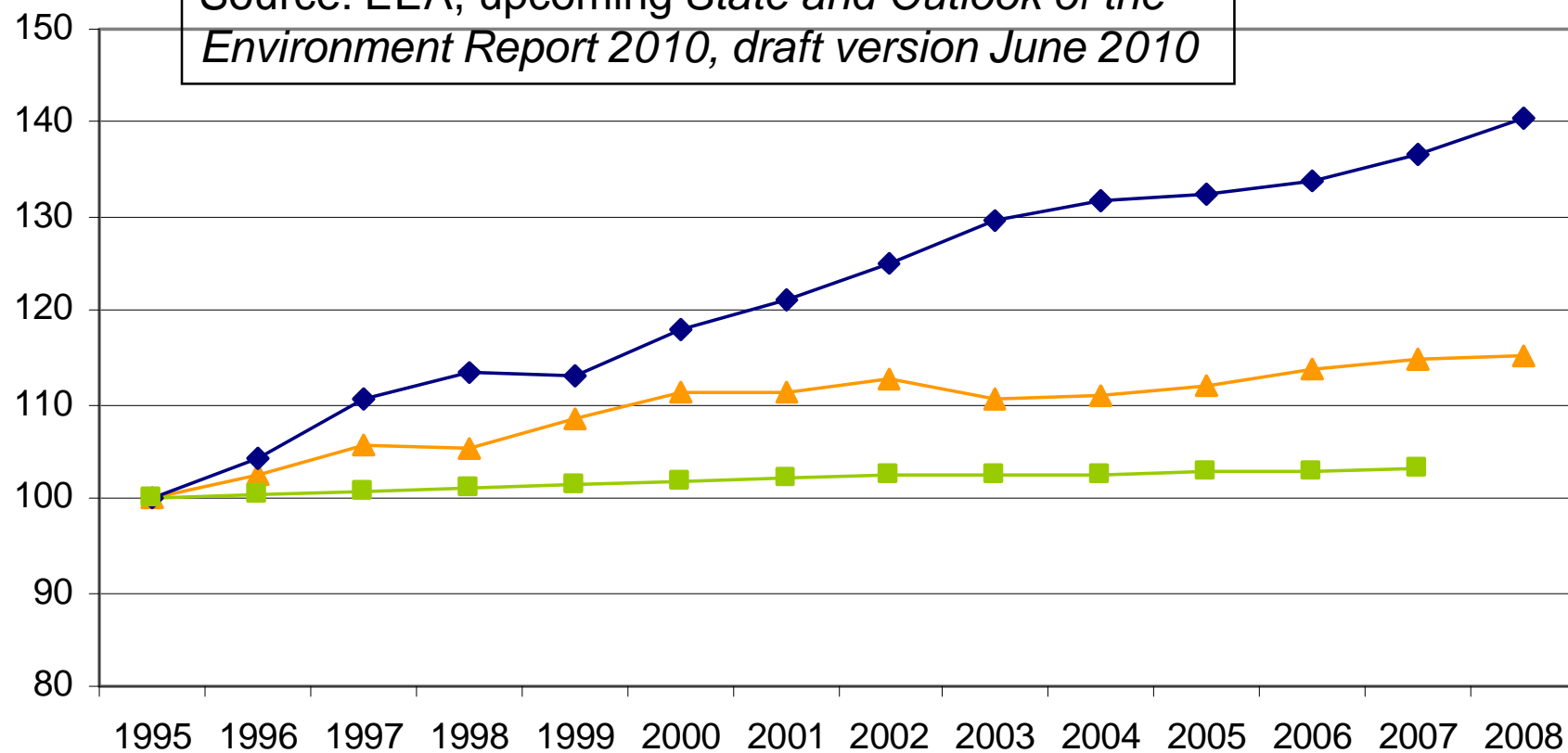


Municipal Waste Generation CSI-16 Kg/capita



Municipal waste is increasing

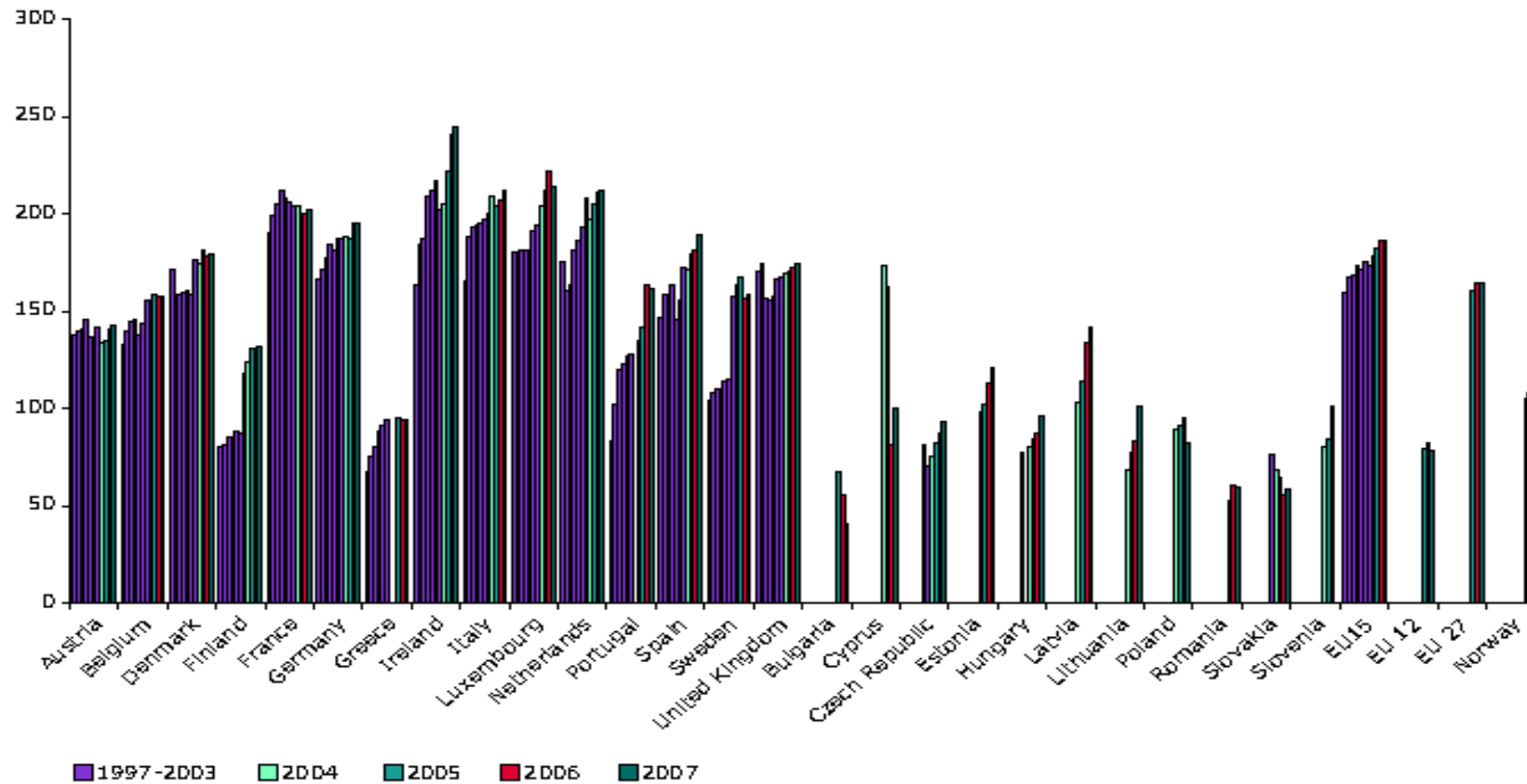
Source: EEA, upcoming *State and Outlook of the Environment Report 2010*, draft version June 2010



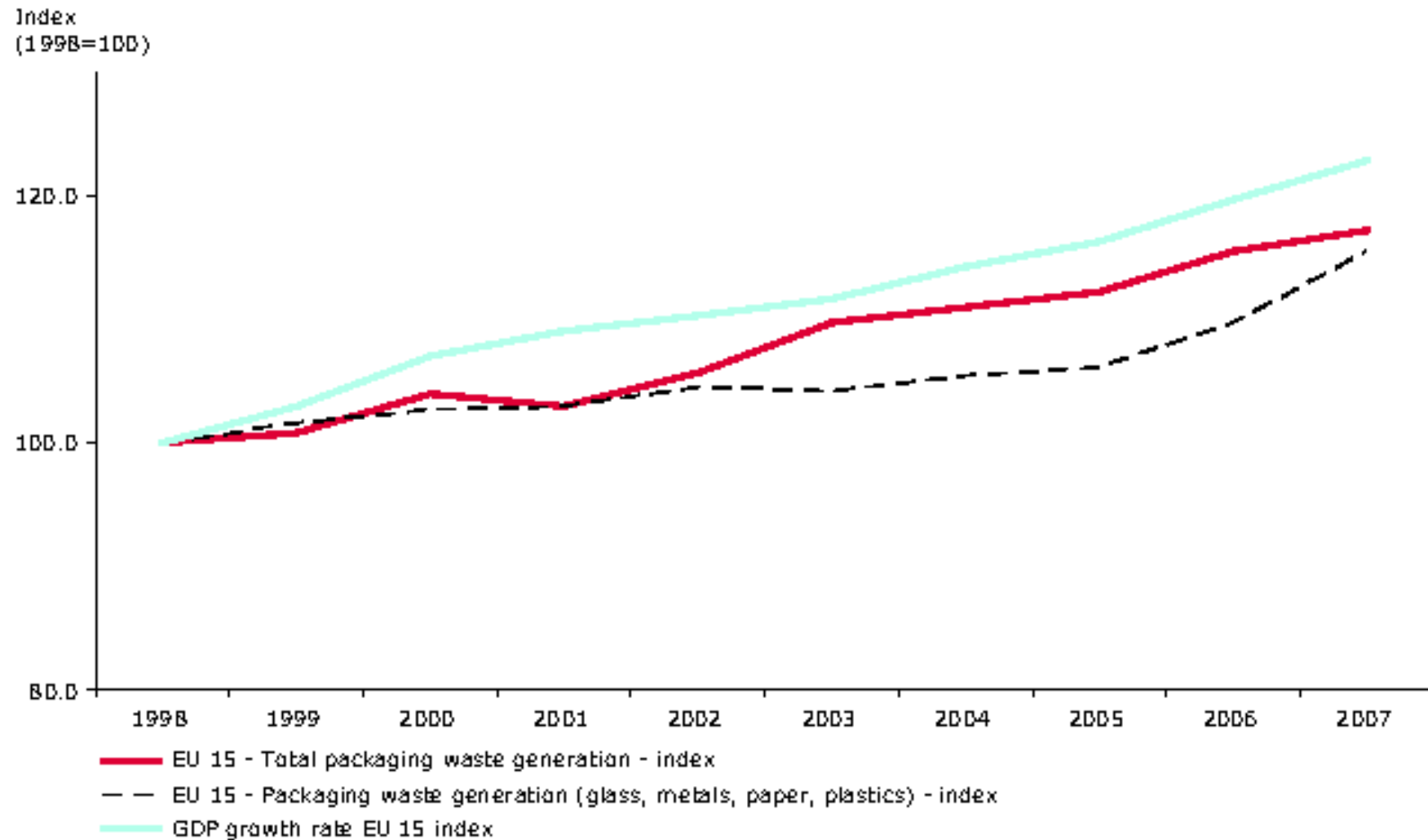
—▲— Index Municipal waste generation EU-27 —◆— Index GDP EU27 —■— Population EU27 index



Generation of Packaging Waste CSI-17



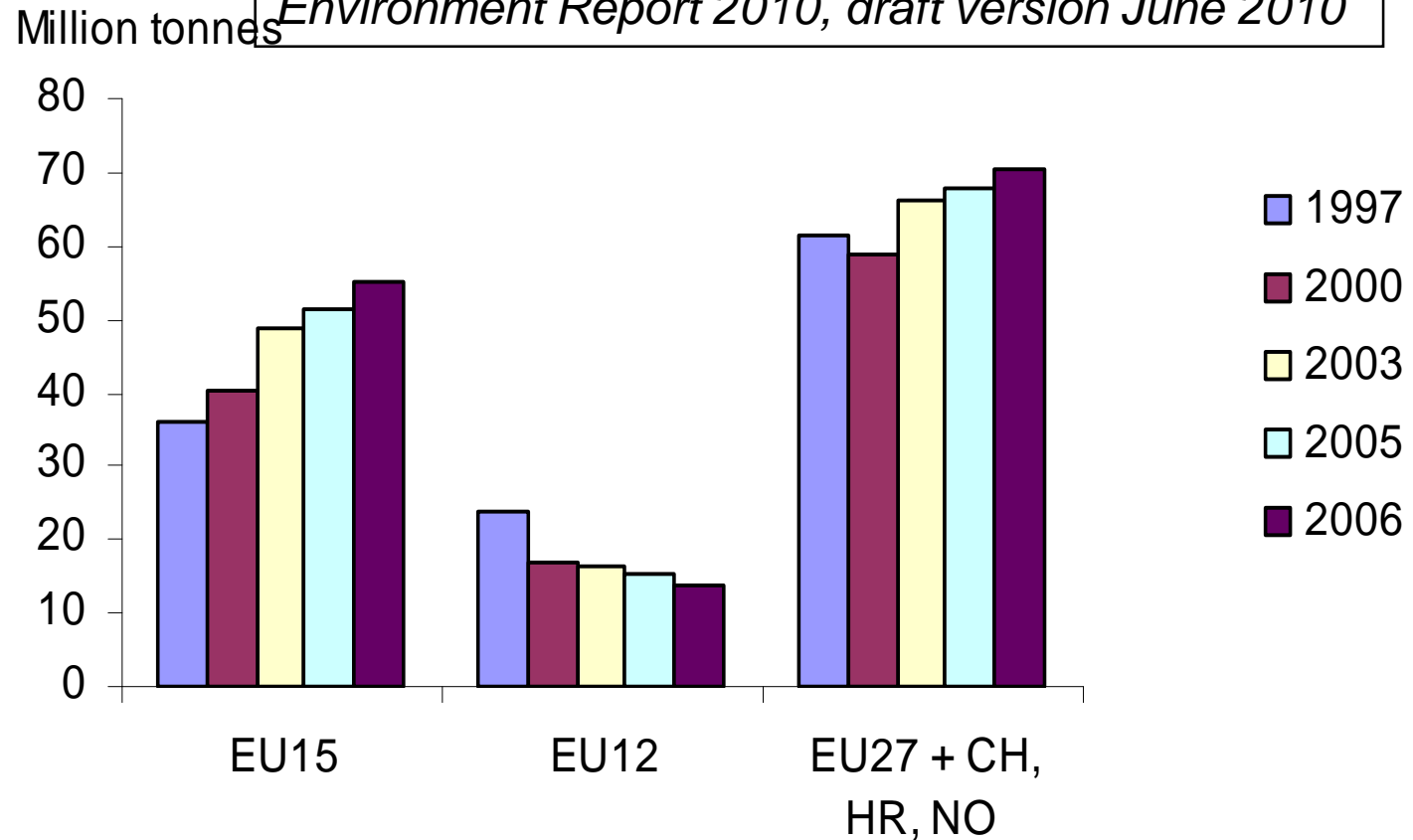
Packaging waste is increasing



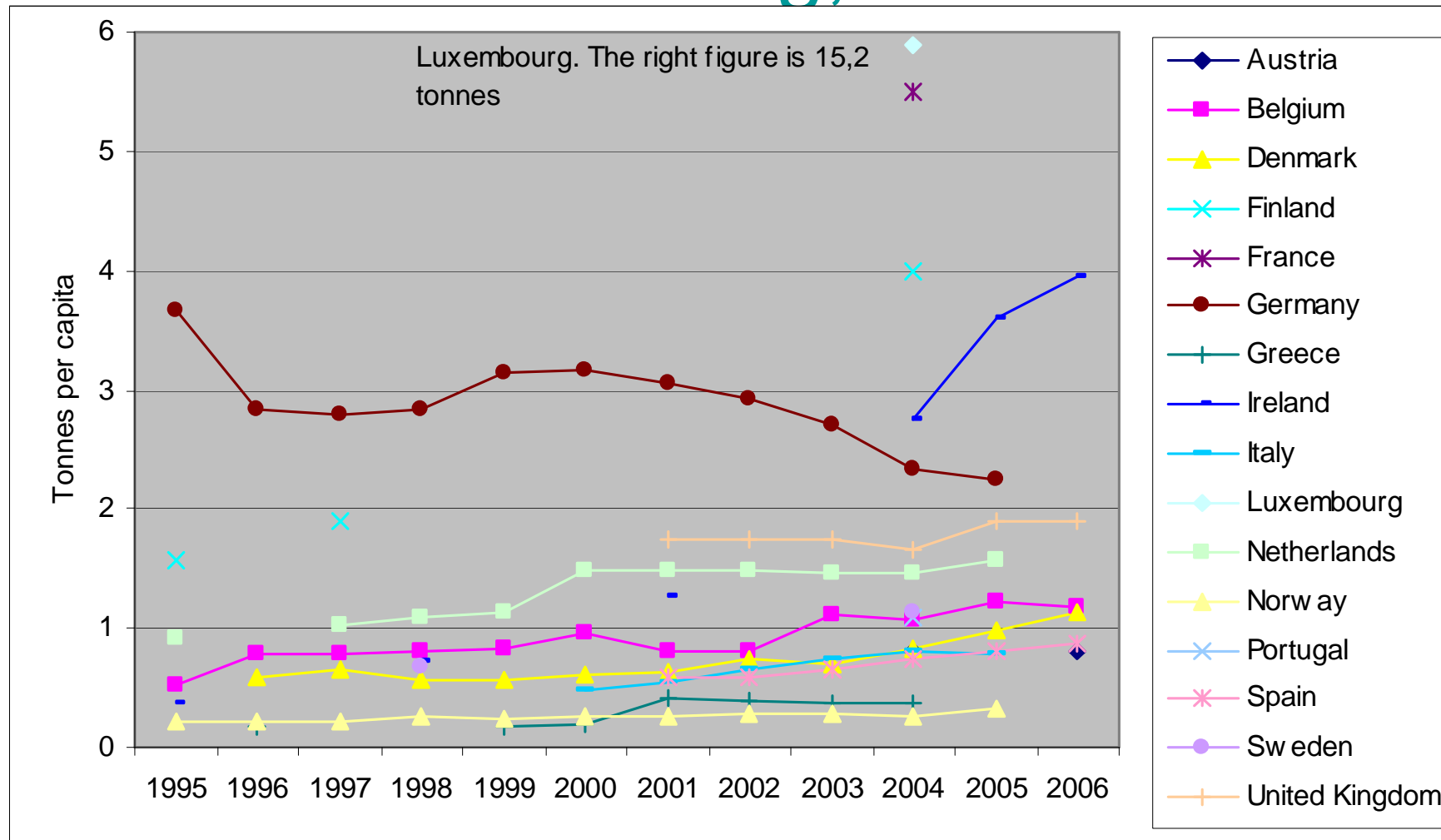
Source: EEA, Core Set Indicator 17 on packaging waste

Hazardous waste is increasing

Source: EEA, upcoming *State and Outlook of the Environment Report 2010*, draft version June 2010

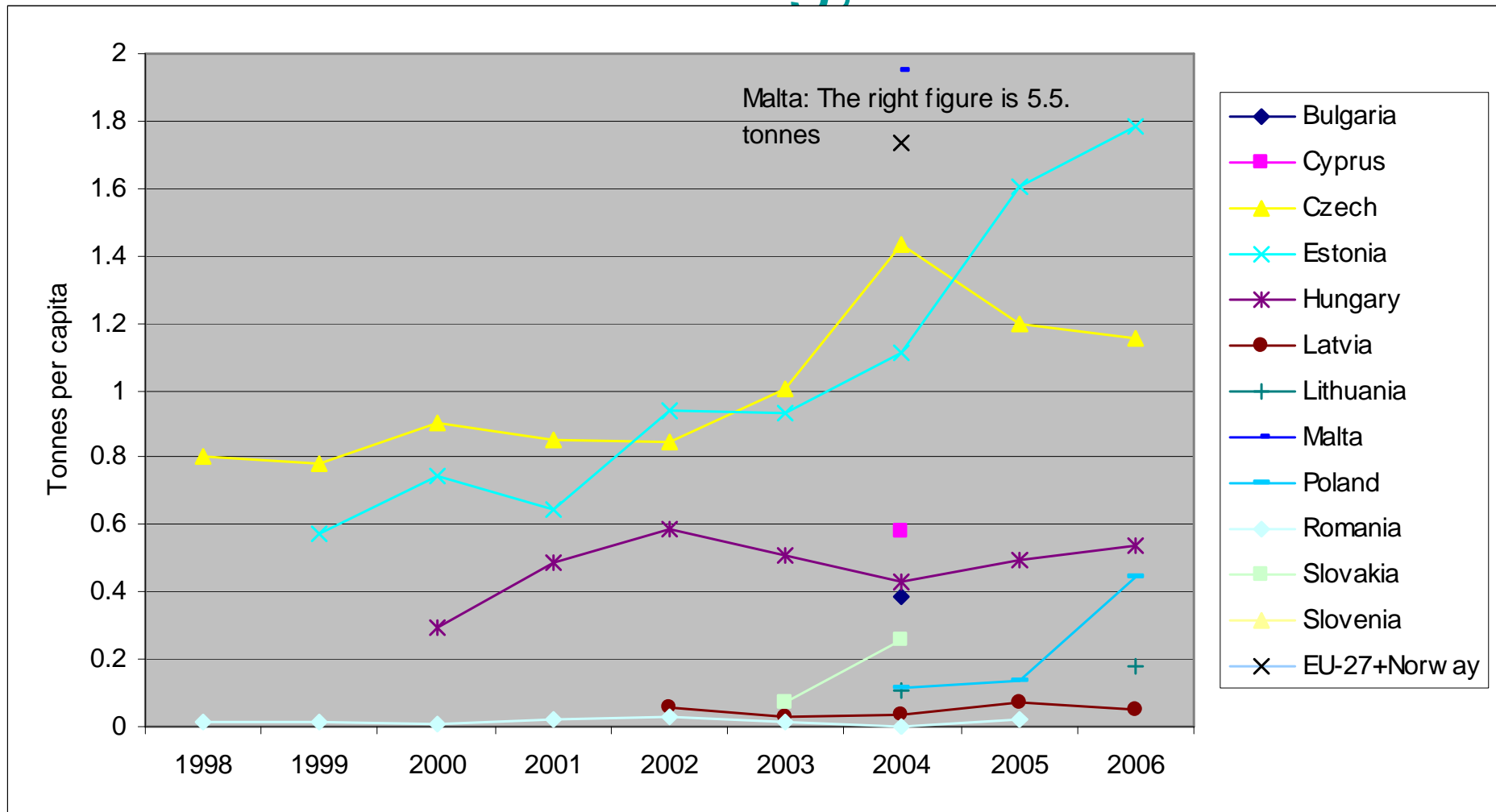


Construction and demolition waste is increasing, EU-15



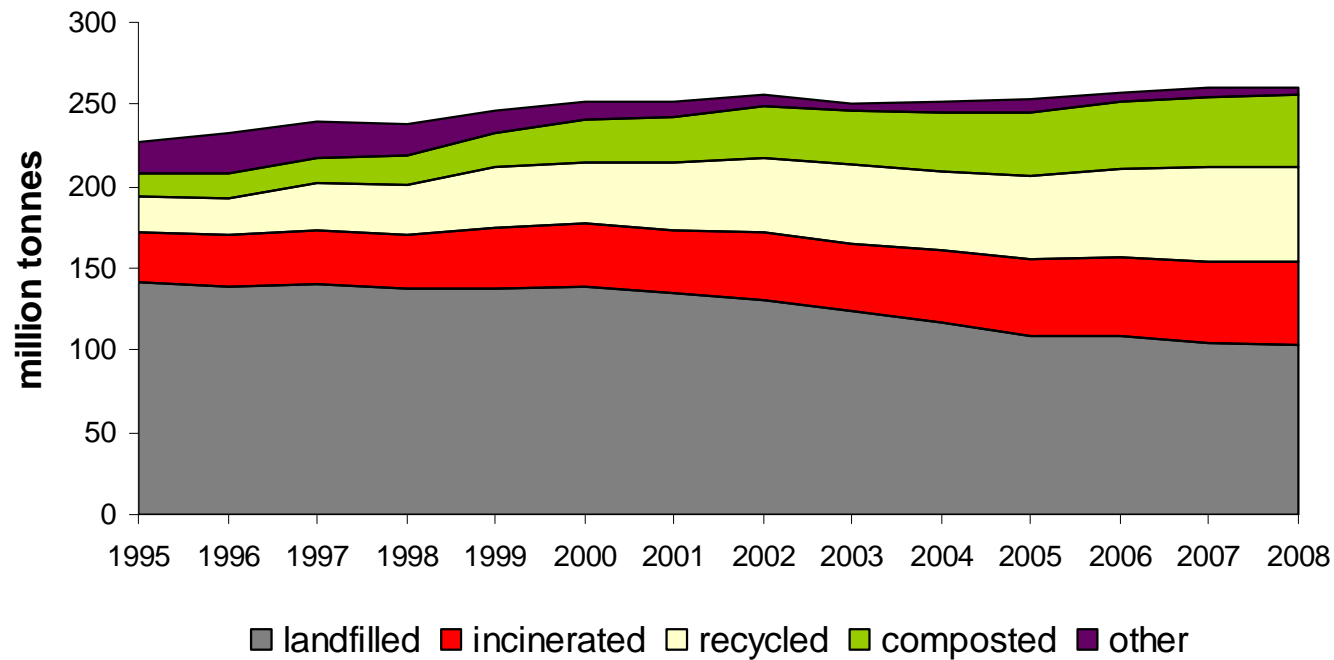
Source: ETC/SCP, based on national data

Construction and demolition waste is increasing, EU-12



Source: ETC/SCP, based on national data

Management of municipal waste 1995-2008



The Landfill Directive's diversion targets

- EU Landfill Directive targets: Reduce biodegradable municipal waste going to landfill
 - to 75 % by 2006
 - to 50 % by 2009
 - to 35 % by 2016

of the total amount generated in 1995

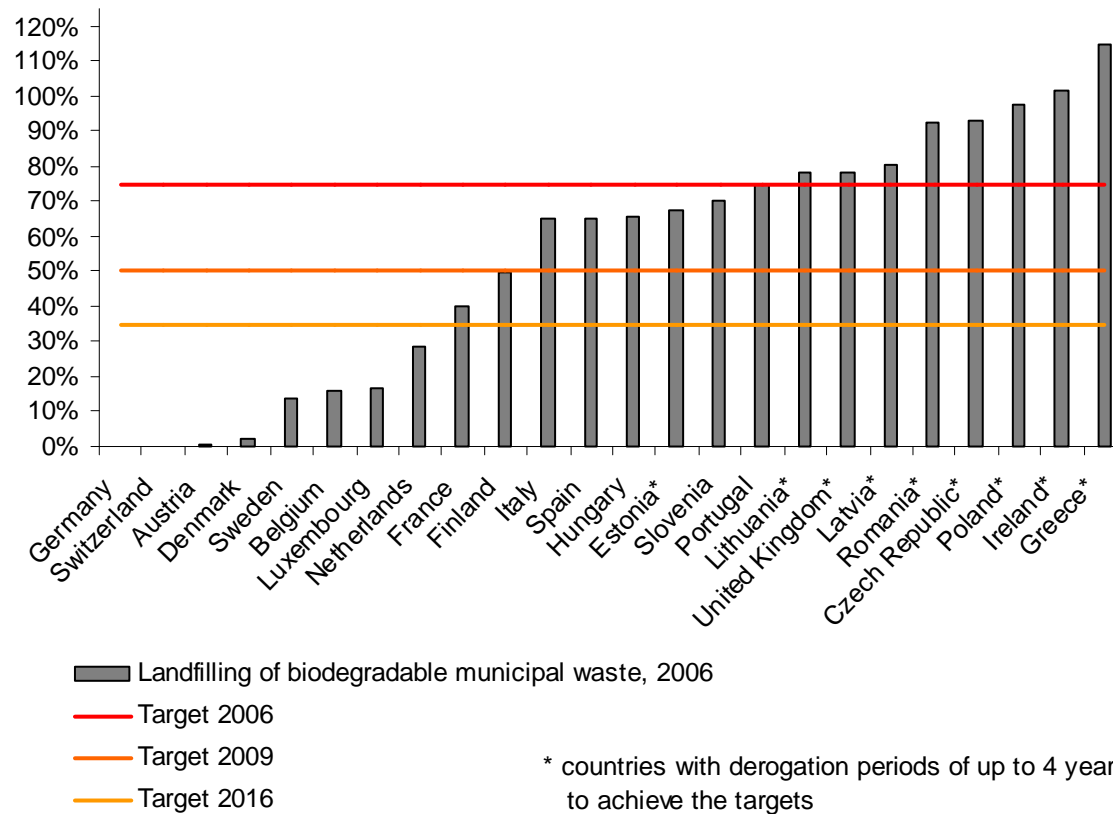


Over 3 300 landfills closed across Europe between 2004 -2006

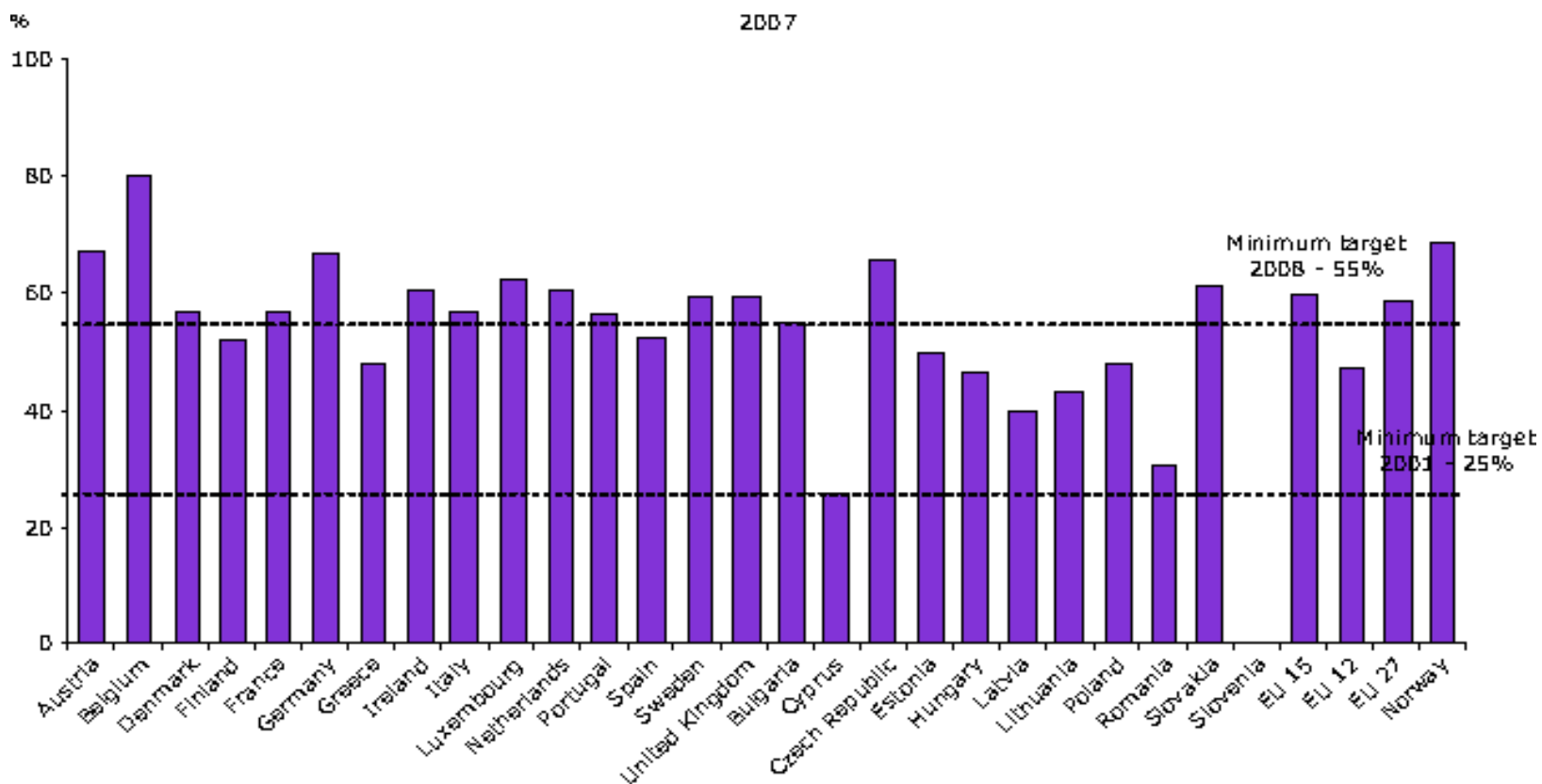
Still a high number of sub-standard landfills in operation, mainly in the new Member States



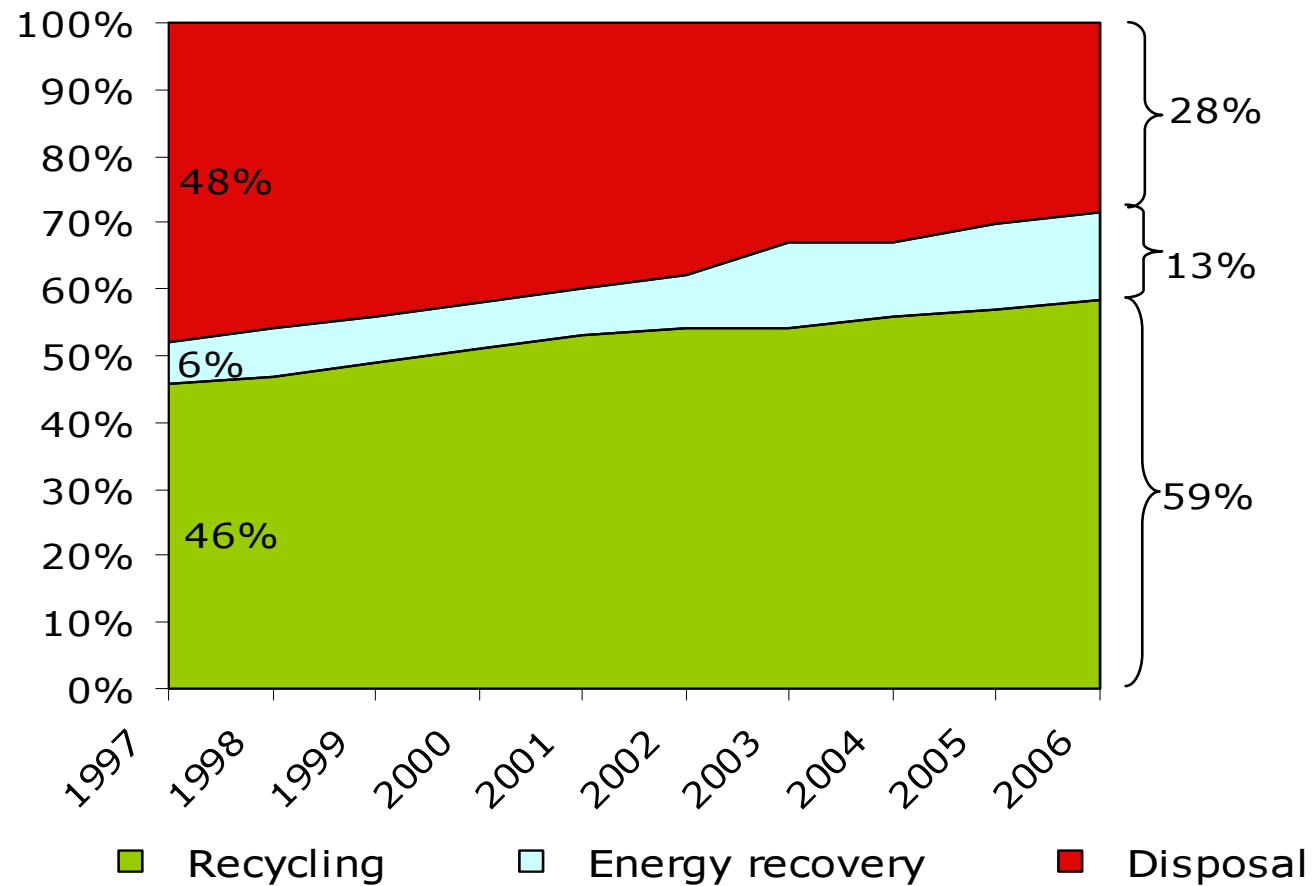
Biodegradable municipal waste landfilled in 2006



Generation and Recycling of Packaging Waste CSI-17



Packaging waste management, EU-15

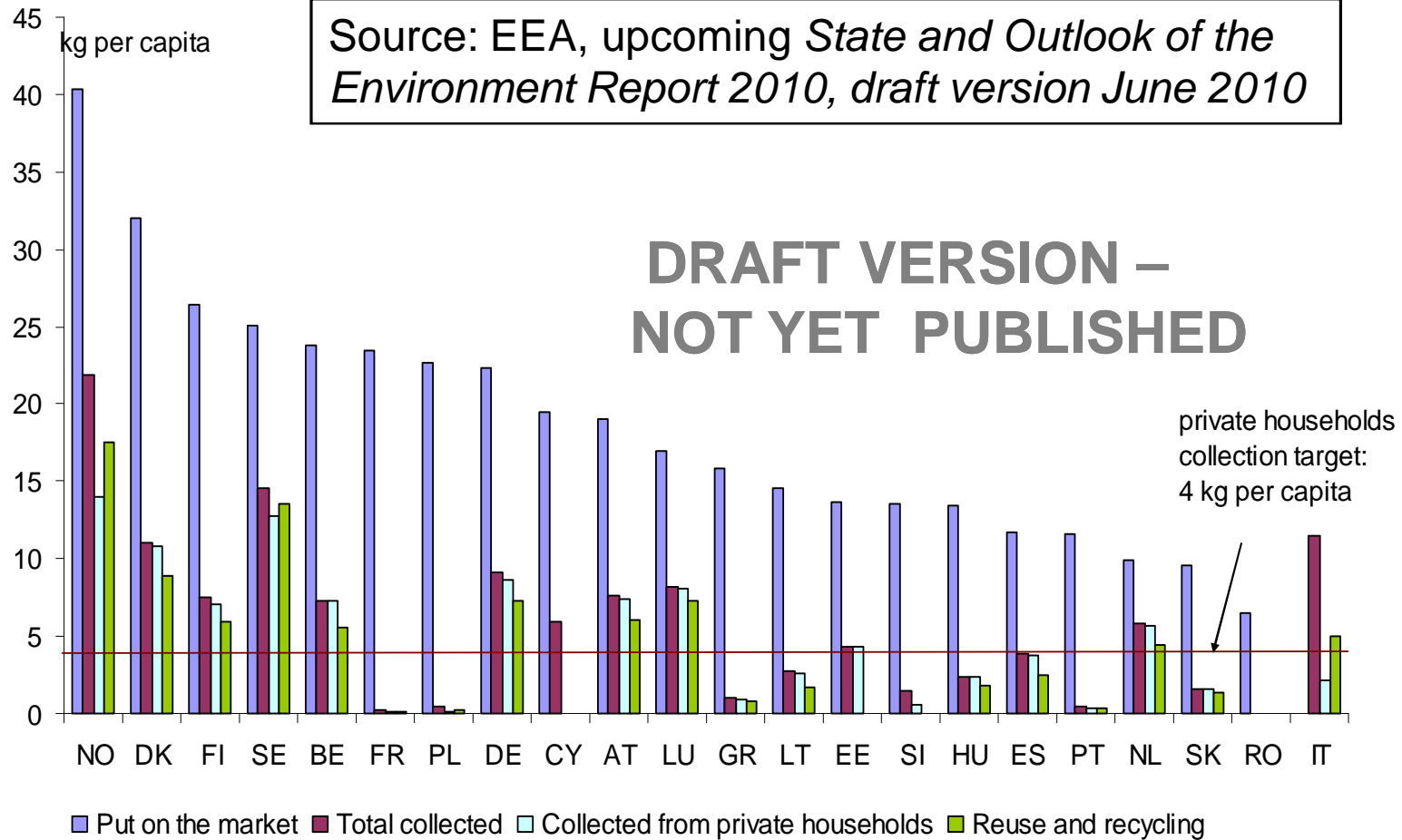


Source:
EEA CSI-17

WEEE

Source: EEA, upcoming *State and Outlook of the Environment Report 2010, draft version June 2010*

**DRAFT VERSION –
NOT YET PUBLISHED**

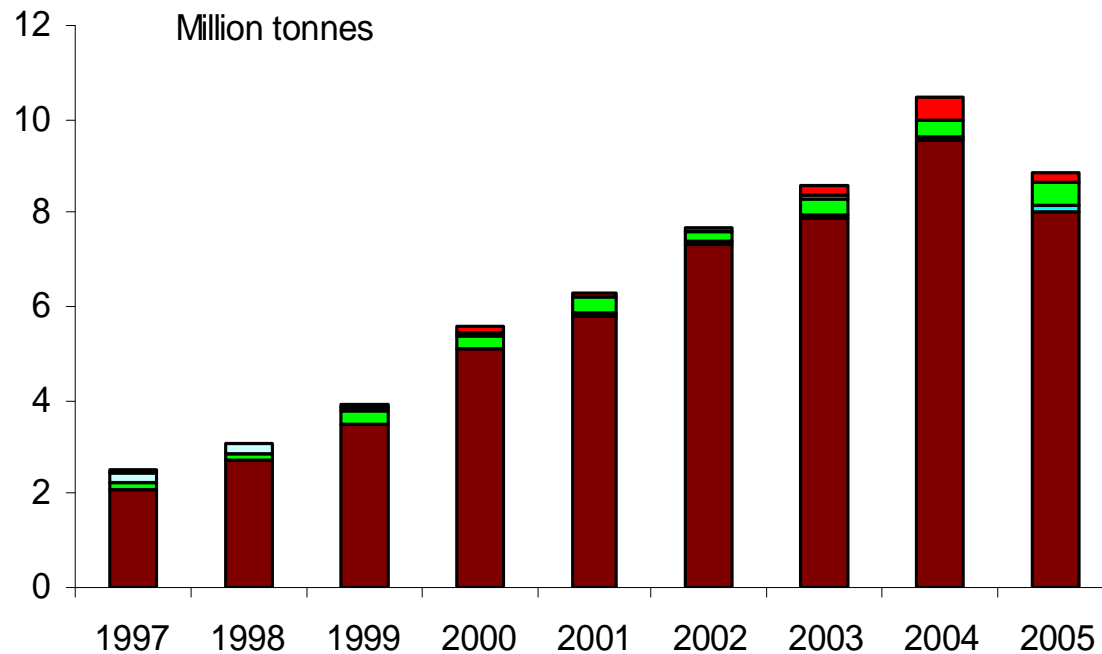


Recycling of end-of-life vehicles



Source: Eurostat

Transboundary shipments of waste are increasing: mostly for recovery/recycling



■ EU-15
■ EFTA
■ Non-OECD (incl. BG and RO)

■ EU-12 excl. BG and RO
■ OECD (non-EFTA)



Main conclusion

- Most flows (total and per capita) are increasing
 - Some are decoupling from GDP

HOWEVER

- *Management is improving (lower impacts)*
- *Increasing recycling/recovery (quantity and rates)*
 - *Not yet enough in some case, great inter-country differences*

CONCLUSION

- **We are moving towards a ‘recycling society’, not yet towards a ‘prevention society’**

For discussion

- How can we reduce waste generation? (prevention)
- How much of the resources we use can be covered by recycled materials? (substitution)
- Environmental benefits of recycling is linked to the quality of recycling (materials and processes) (innovation)
- Illegal export for some wastes poses a threat to the environment and to the recycling markets (institutions)



Recent EEA-ETC/SCP Reports and Publications on Waste (2009)

- The European Recycling Map (ETC/SCP)
- Diverting waste from Landfill
- Waste without borders in the EU
- Transboundary Shipment of Waste – Data Report (ETC/SCP)
- EU as recycling society. Present recycling levels of Municipal Waste and C&D Waste in the EU (ETC/SCP)
- <http://www.eea.europa.eu/publications>
- <http://scp.eionet.europa.eu/publications>

Diverting waste from landfill



Contents:

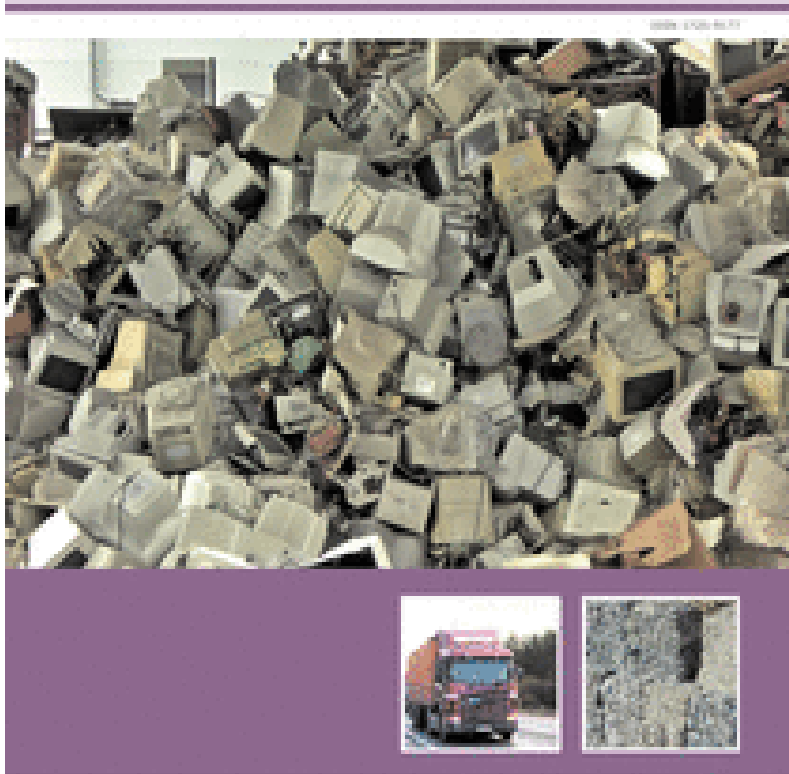
- Analyses the effectiveness of national policies on diverting total municipal waste and biodegradable waste from landfill.
- Which instruments work well, which don't, and why?
- Is Europe on track to meet the targets? (Landfill directive)

Waste without borders in the EU

EUA Report | No 1/2009

Waste without borders in the EU?

Transboundary shipments of waste



Contents:

- Regulations for waste shipments
- Shipments of notified waste
- Illegal shipments
- Conclusions – better reporting needed

Ongoing Projects (2010)

- **Transboundary Shipment of Waste**
- **Recycling and Green economy in the EU**
- **Factsheets on waste policies** - Preparation of country factsheets
- **Eionet workshop on waste**

Transboundary shipments of waste

- What are the **drivers** behind waste shipments?
- What are the **environmental impacts** resulting from waste shipments?
- *Developing a methodology for estimating the environmental impacts and drivers of the transboundary waste shipments.*
- *Application of the methodology on selected waste streams.*
- *Giving an input to the ongoing debate about the transboundary shipment of waste*



Recycling and the Green Economy

- Defining the coherence between recycling and the green economy
- Documenting the current value and importance of selected recyclable waste streams for the economy
- Documenting how much of the input of selected resources used in the EU can be potentially be provided by recycling of the selected waste streams.
- Analyzing the recycling potential of different economic sectors and their significant economic, environmental and social impacts.



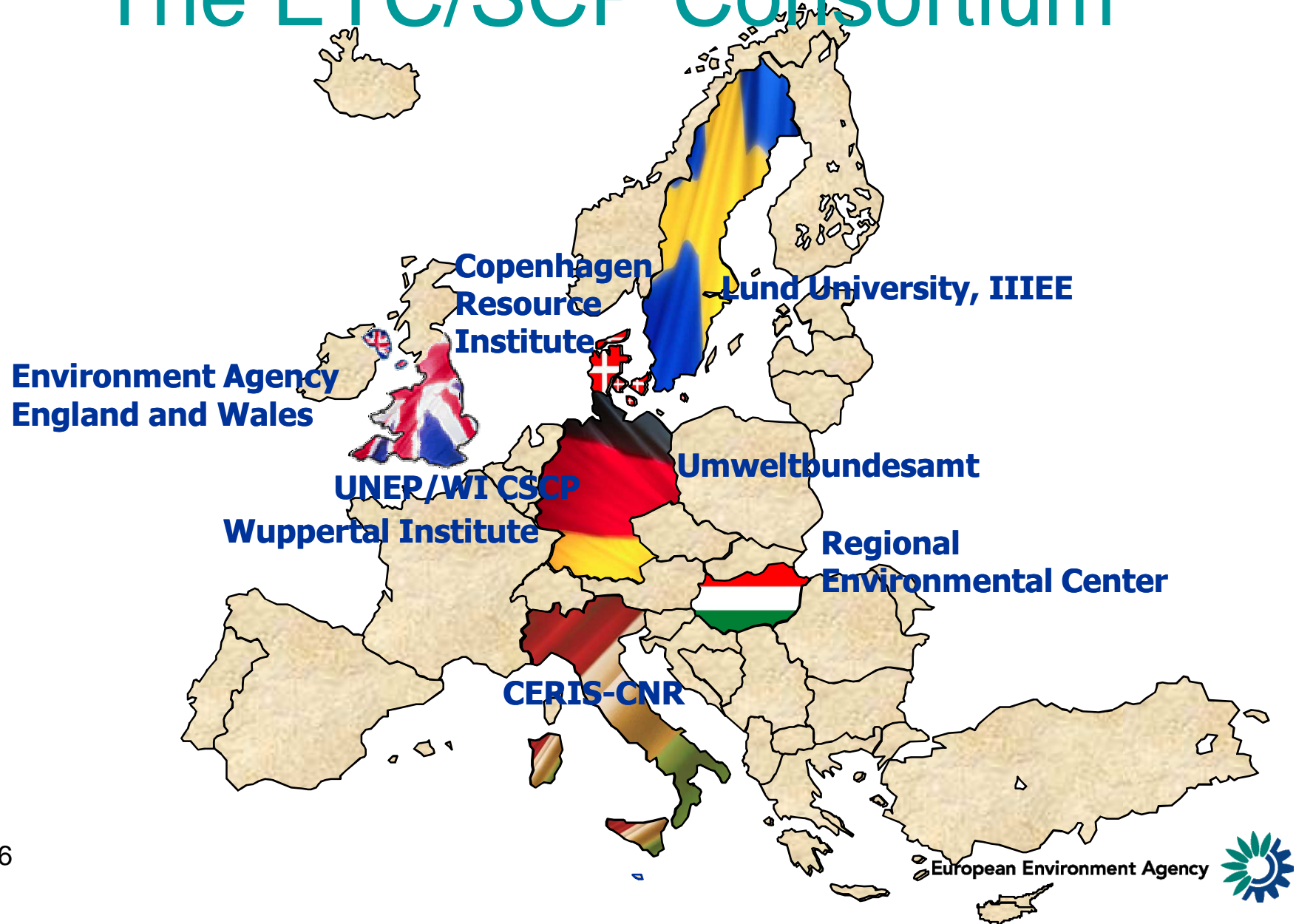
Fact sheets on waste policies

- Published in 2010
http://scp.eionet.europa.eu/facts/factsheets_waste/2009_edition
- General facts
- National waste legislation
- National waste management plan
- Waste prevention
- Construction and demolition waste
- Biodegradable municipal waste
- Bibliography
- Links to national websites

Eionet workshop on waste

- 10-11 November 2010, Berlin.
- Focus on waste prevention.
- Production, consumption, wholesale, retail phases.
- Facilitating the exchange of best practices in waste prevention. (38 countries including Serbia)

The ETC/SCP Consortium



European Environment Agency

Thank you for your attention



www.eea.europa.eu

ETC/SCP: <http://scp.eionet.europa.eu/>

European Environment Agency

