

Sustain.
Mobility

Open
Source

FabMob

Shared Mobility Conference, Rome 2019







Empower Entrepreneurs, Cities, Labs, Schools with **Open Source**

for **building** sustainable Mobility





Create Open Assets useful for all stakeholders : data, soft and hardware





Market
Strategy

User
Contributor

Community,
Ecosystem

License,
Business
Model

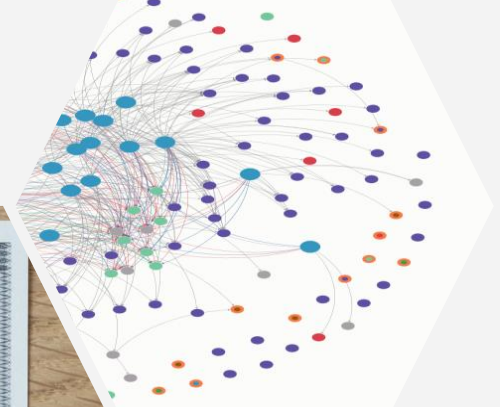


New Culture

Open Assets
(commons)

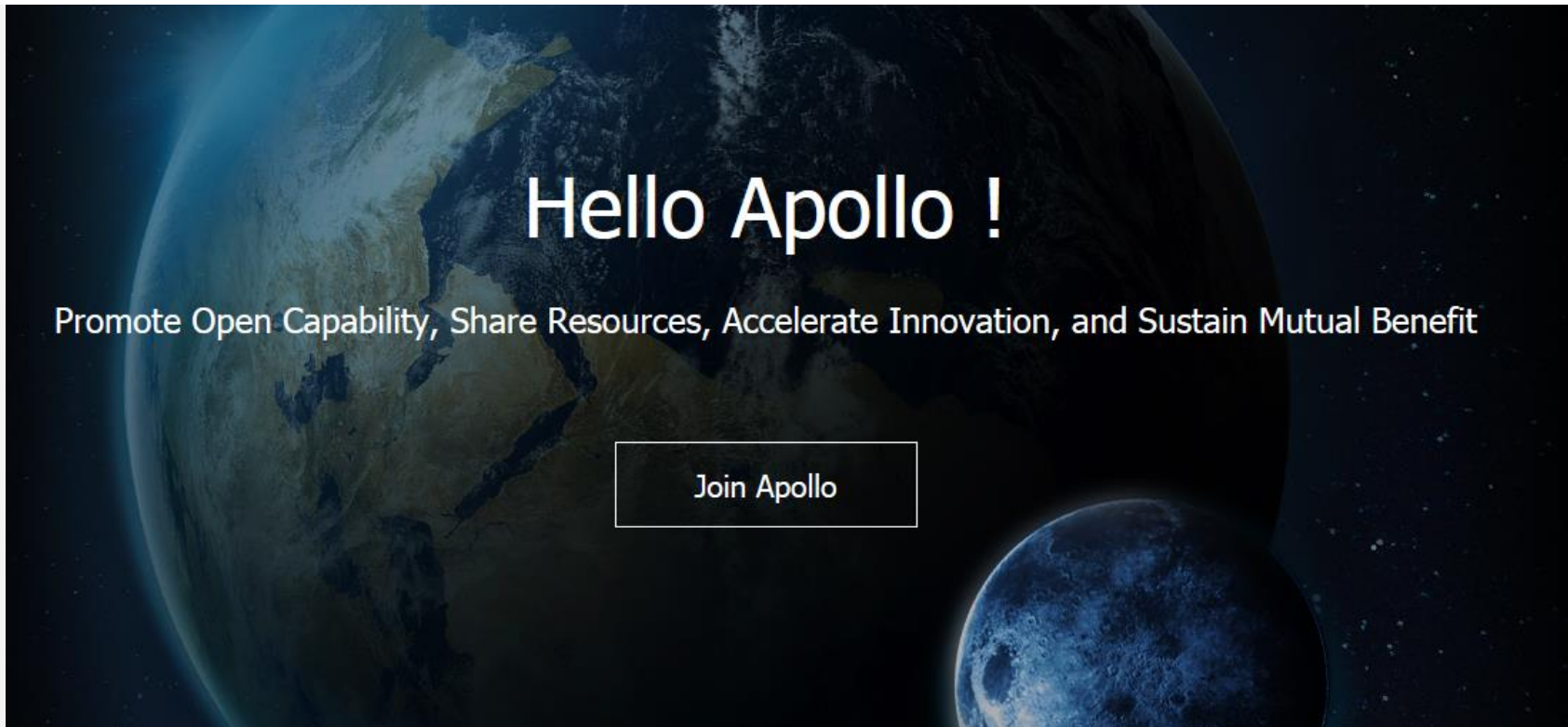


Open Source Power





Open Source is not anymore an option for Europe





Open Source is not anymore an option for Europe



NON - PUBLIC MEMBERS



AUSTIN, TX



BOGOTÁ COLOMBIA



CHICAGO, IL



LOUISVILLE, KY



LOS ANGELES, CA



MIAMI, FL



SUPPORTERS



MIAMI-DADE COUNTY, FL



MINNEAPOLIS, MN



NEW YORK CITY, NY

ADVISORS



PHILADELPHIA, PA



PORTLAND, OR



SAN FRANCISCO, CA





+50 partners – France & Québec – Starting in Africa & Germany

30
Persons

20
Companies
Michelin
Renault
Engie...

9 clusters

7
Schools
& labs

1+1
Wiki.fabmob.io
Chat.fabmob.io



**LA FABRIQUE
DES MOBILITÉS**

1
Network

2000
contacts

300+
startups
8 Cities

320
commons

20+
communities



QUEBEC

FabMob Quebec

GERMANY

Open Source Lab
(VW foundation)



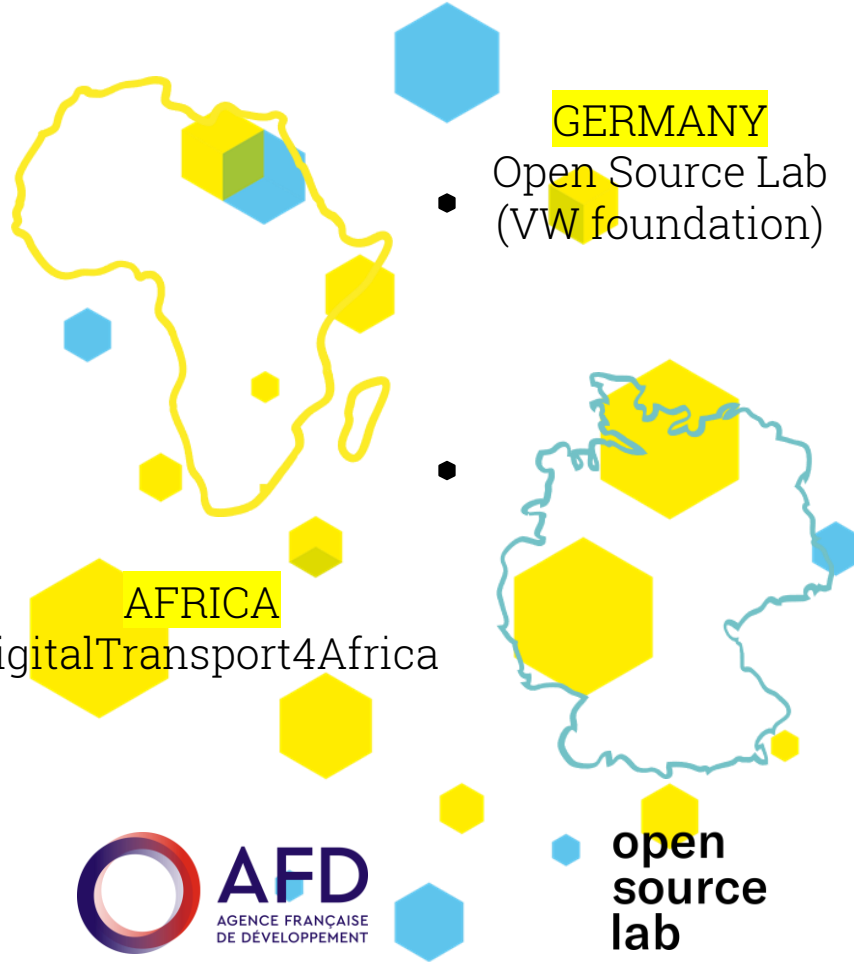
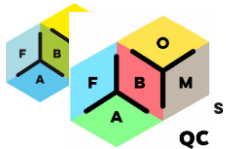
ITALY

Starting a FabMob ?

AFRICA
DigitalTransport4Africa



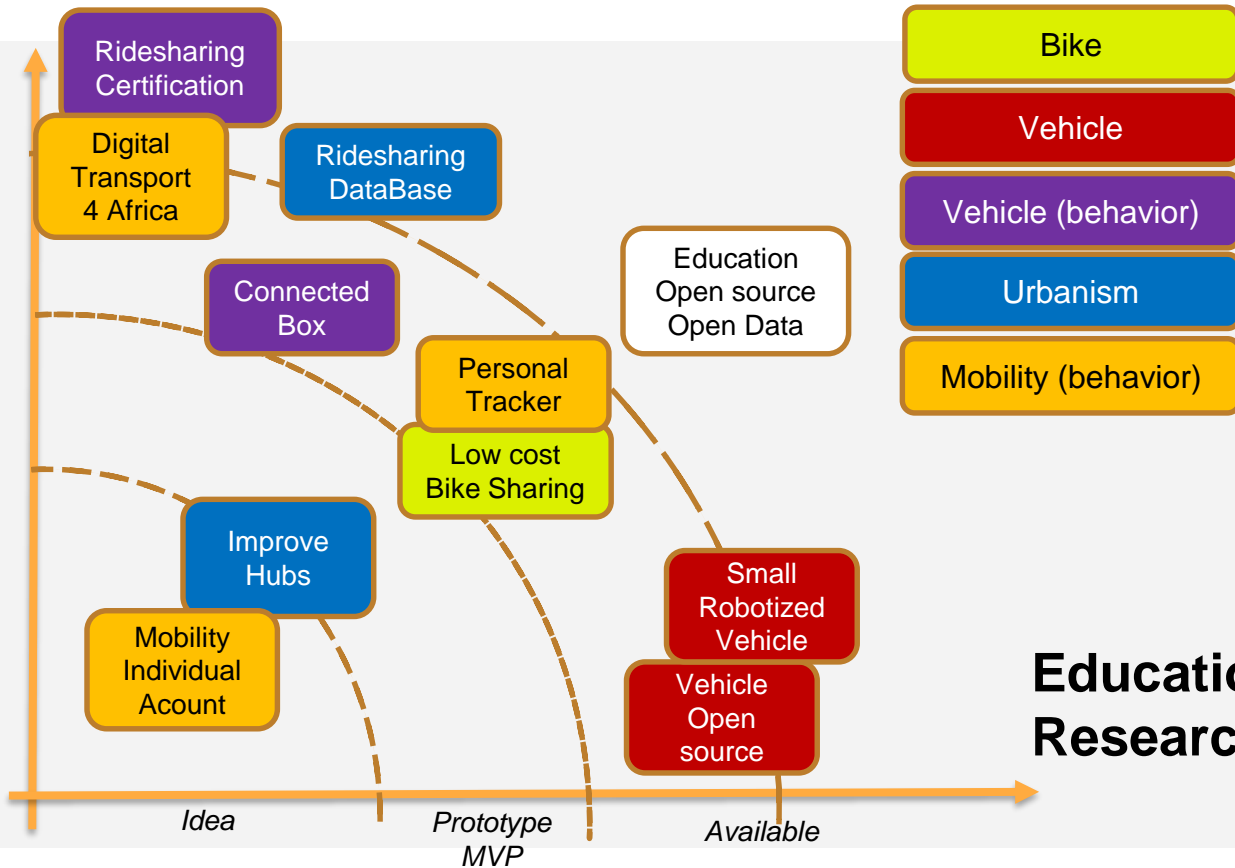
open
source
lab





On going Commons in production ...

Market



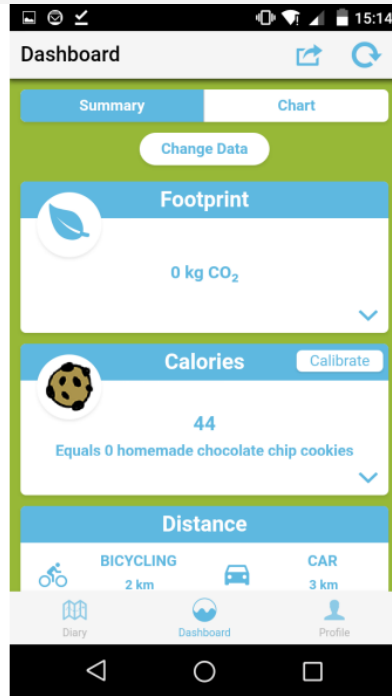
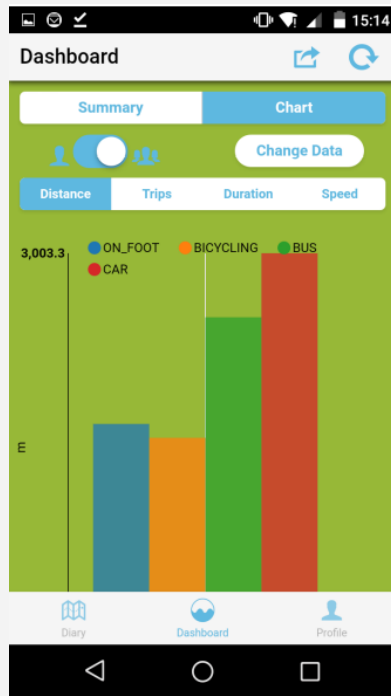
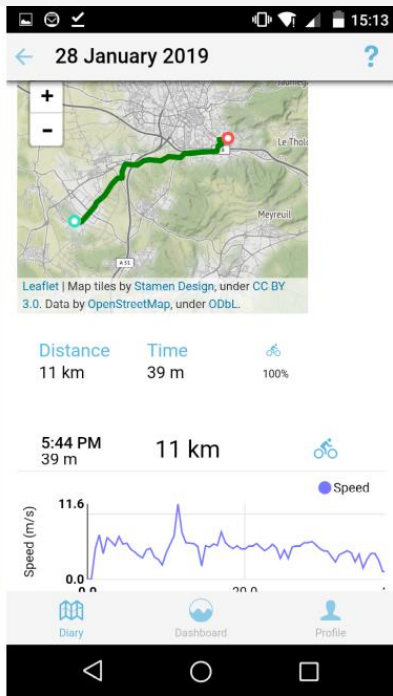
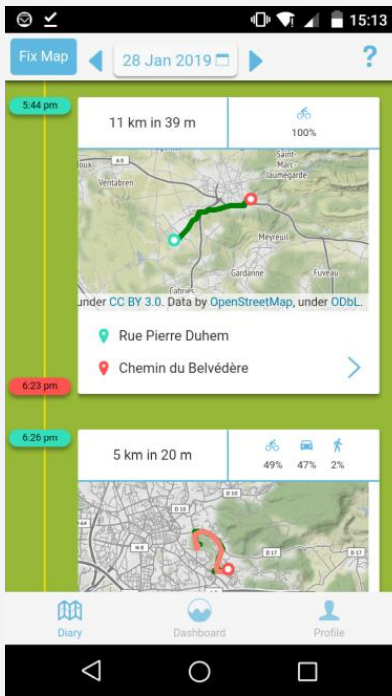
**Education
Research**





Personal Tracker App

<https://oultim.frama.site/>





Personal Tracker App , Toward an international community...

Berkeley, USA
E-Mission

Open Source Lab,
Germany
Facteur
d'émissions

NEC, Germany

FabMob France

Itinerum, Montréal

Nokia, France
Open source
Tracking App SDK



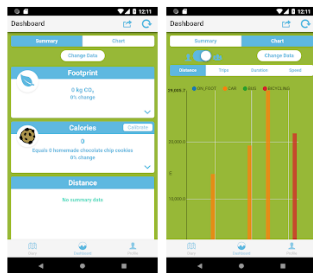
Traceur de mobilité FabMob

La Fabrique des Mobilités Plans et navigation

PEGI 3

Cette application est compatible avec certains de vos appareils.

Installée





Connected Box Open Source

<http://occ-challenge.strikingly.com/>



CARTE MANGOH & EXTENSIONS



Voiture :

- Données GPS (NMEA) vers la Gateway. (`gpsd :: serial`)
- Données CAN.
- Détecteur de distraction.
- Détecteur d'endormissement. (`OpenCV`)

Gateway :

- Interroge le CAN et récupère les autres données en série
- Remonte les données CAN - GPS - endormissement vers le cloud
- Transfère la donnée en liaison série vers le tableau de bord

Dashboard:

- Géolocalisation de la voiture sur une map
- Détection des excès de vitesse
(par rapport à la vitesse max tolérée sur la route actuelle)
- Avertissement à l'écran en cas d'endormissement



Let's create a FabMob in **ITALY** ☺ Fabmob.io / wiki.Fabmob.io

Gabriel.plassat@ademe.fr

